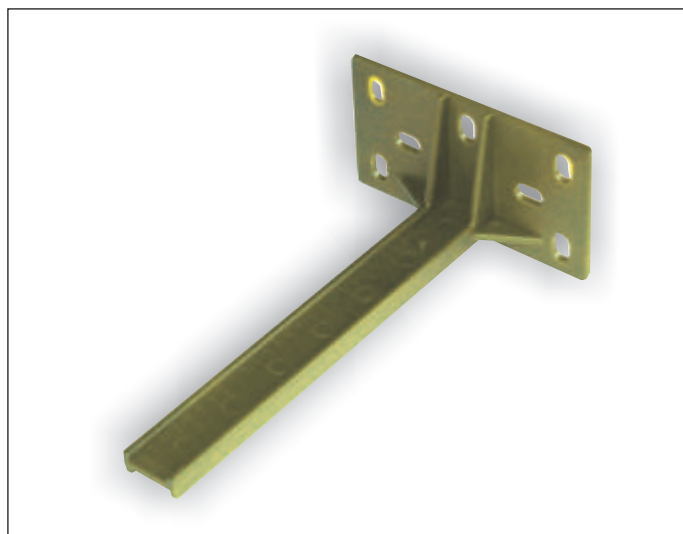


Pre-assembly template

The installation procedure on site can be simplified using the pre-assembly template with a wall bracket. Distances from the wall and mounting dimensions can be prepared without installing the radiator.



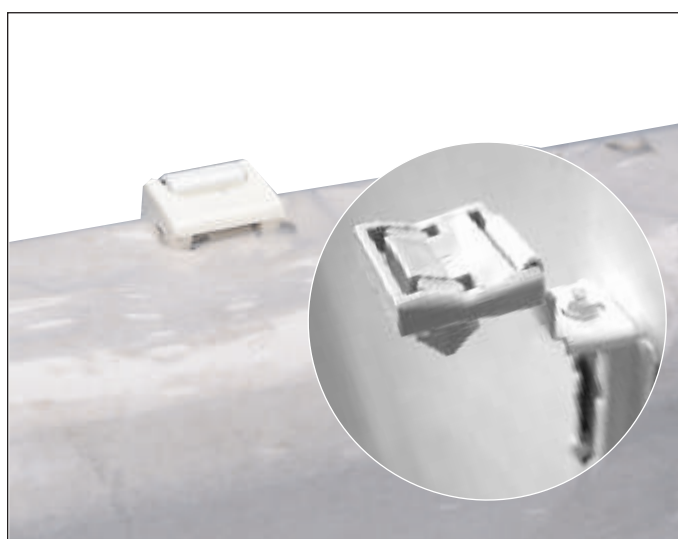
Item no. 1-005912
Item des. Pre-assembly template Standard



Item no. 1-005913
Item des. Wall bracket for pre-assembly template Standard

Pre-assembly adapter for attaching with foil

The pre-assembly adapter as a mounting aid for attaching with foil makes it easier to attach the radiator using spring-type brackets without removing the foil packaging.



Item no. 1-002512
Item des. Pre-assembly adapter for attaching with foil